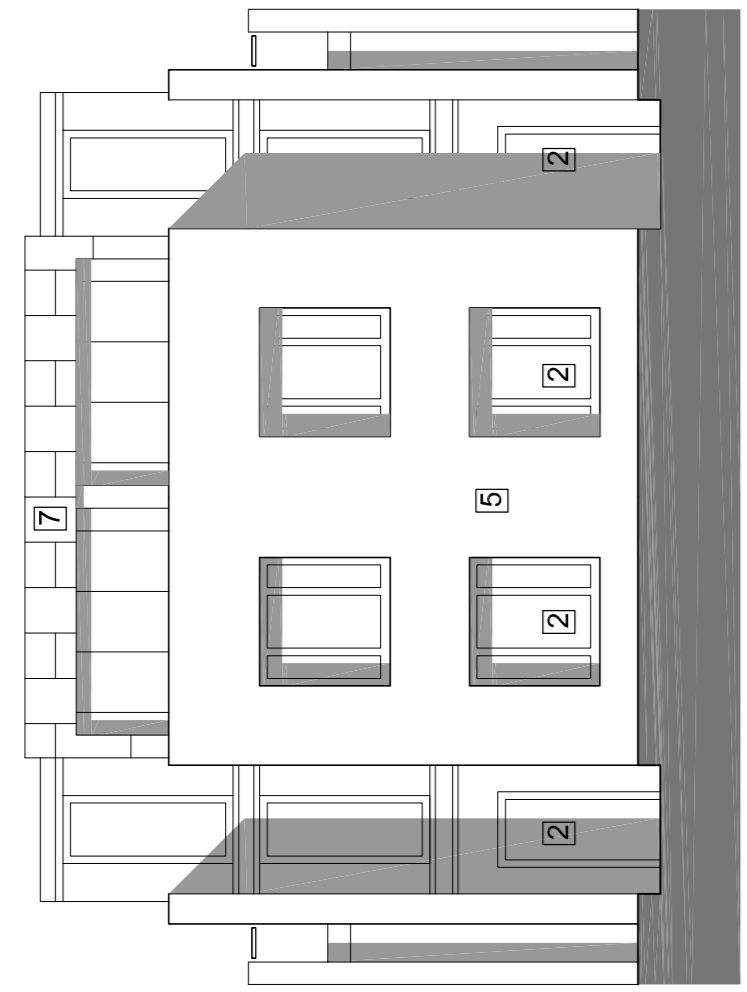
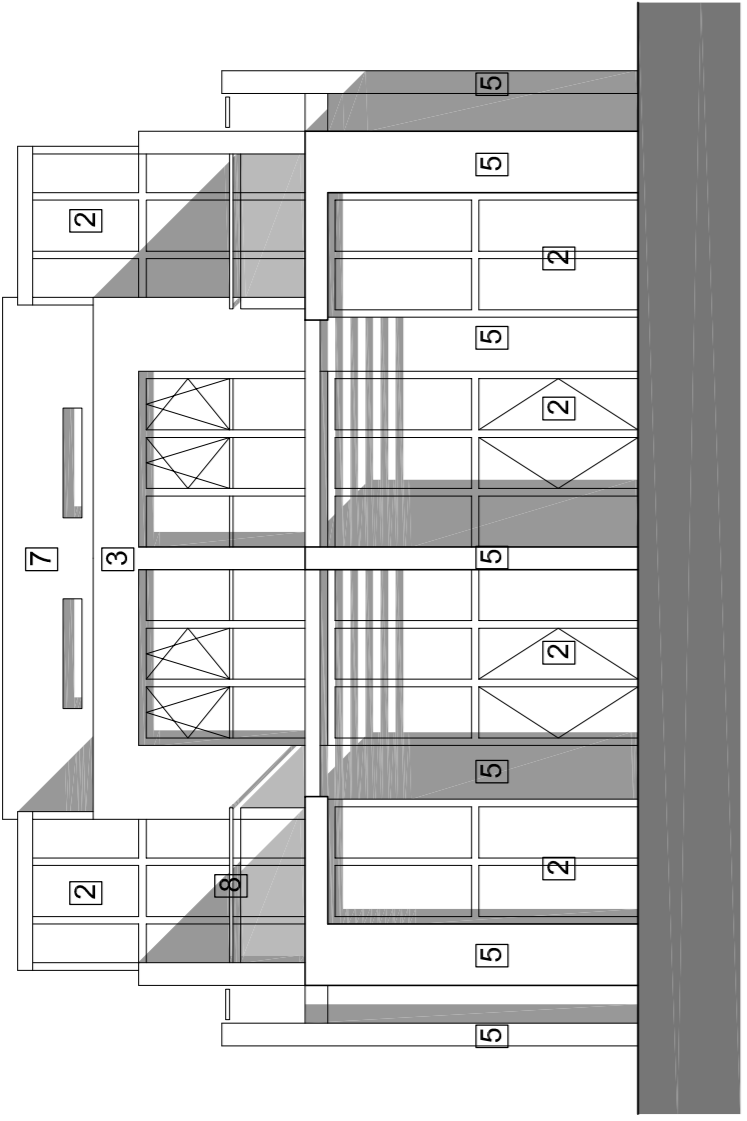


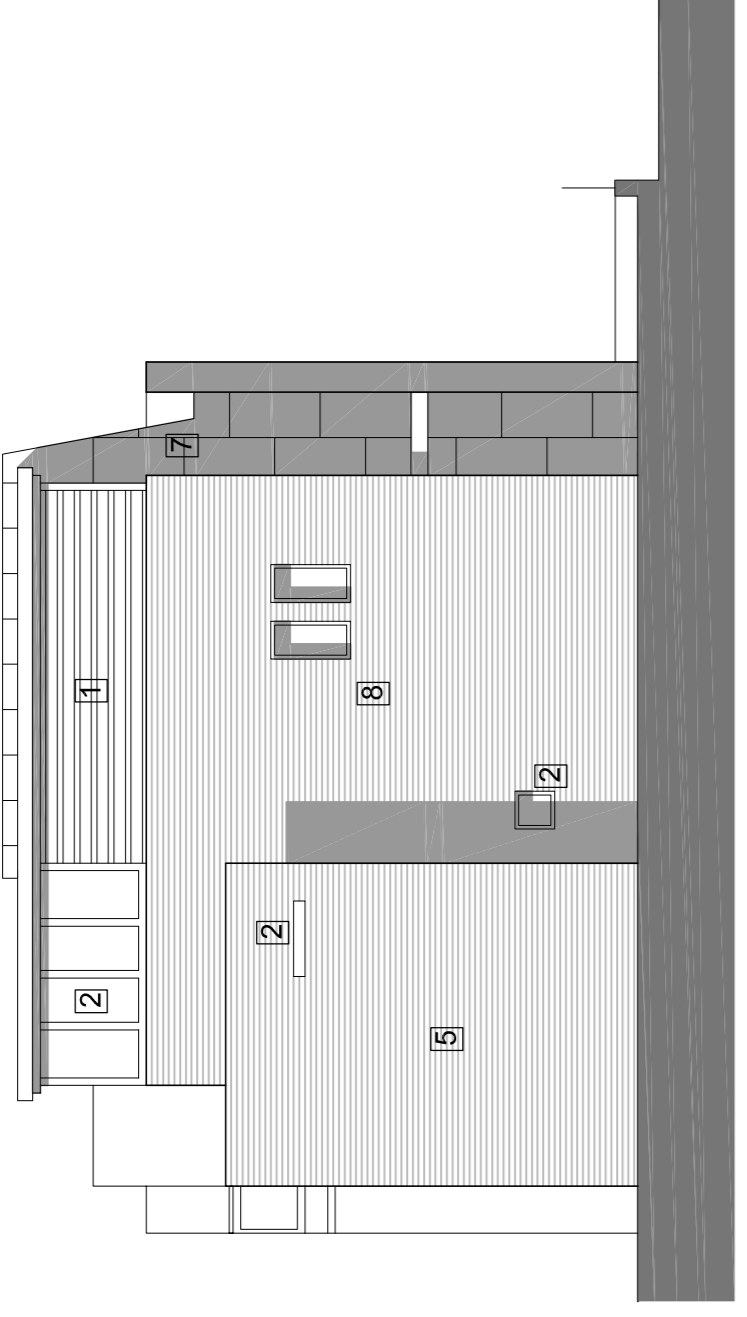
Do not scale from this drawing. Check all dimensions on site



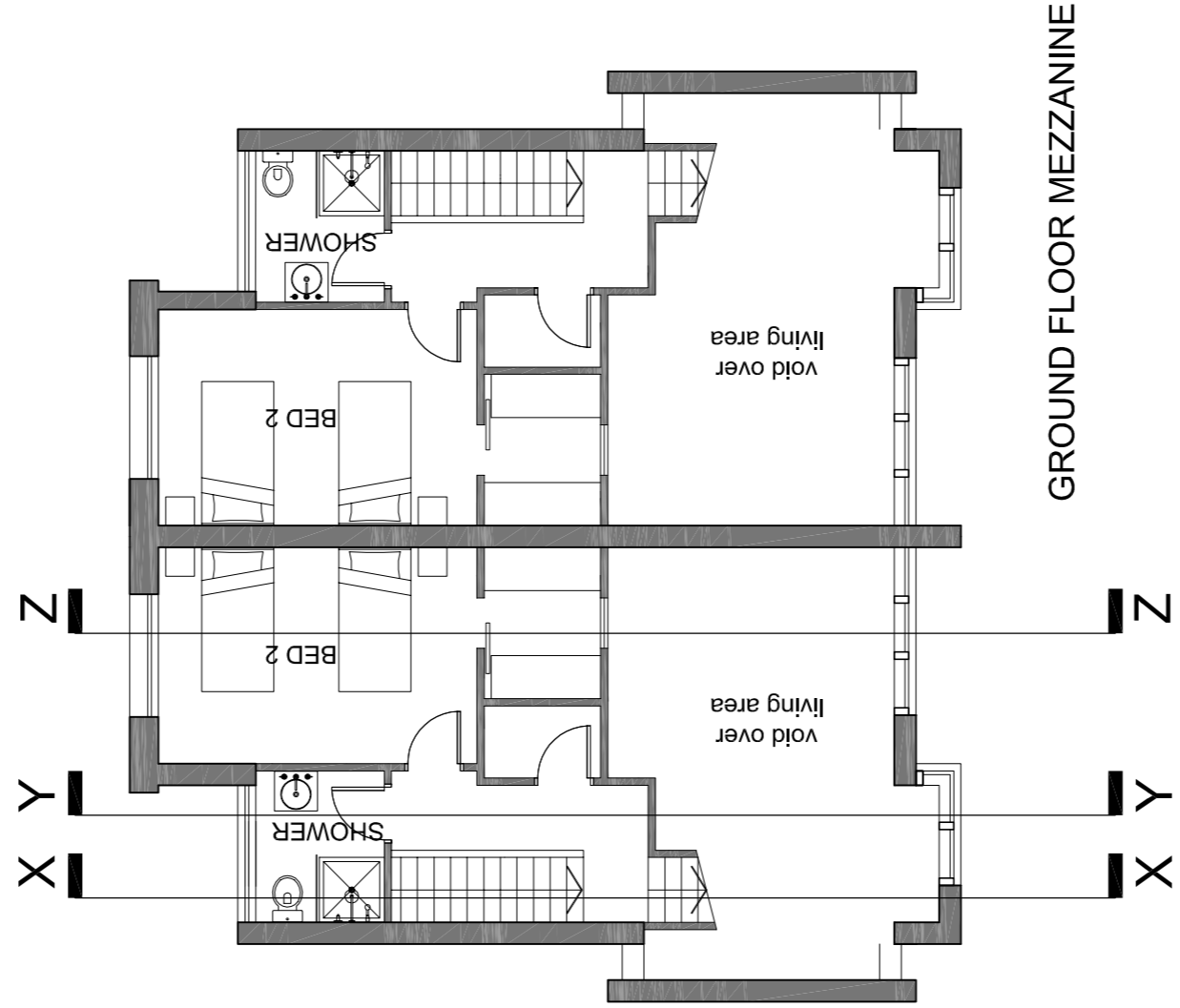
FRONT ELEVATION



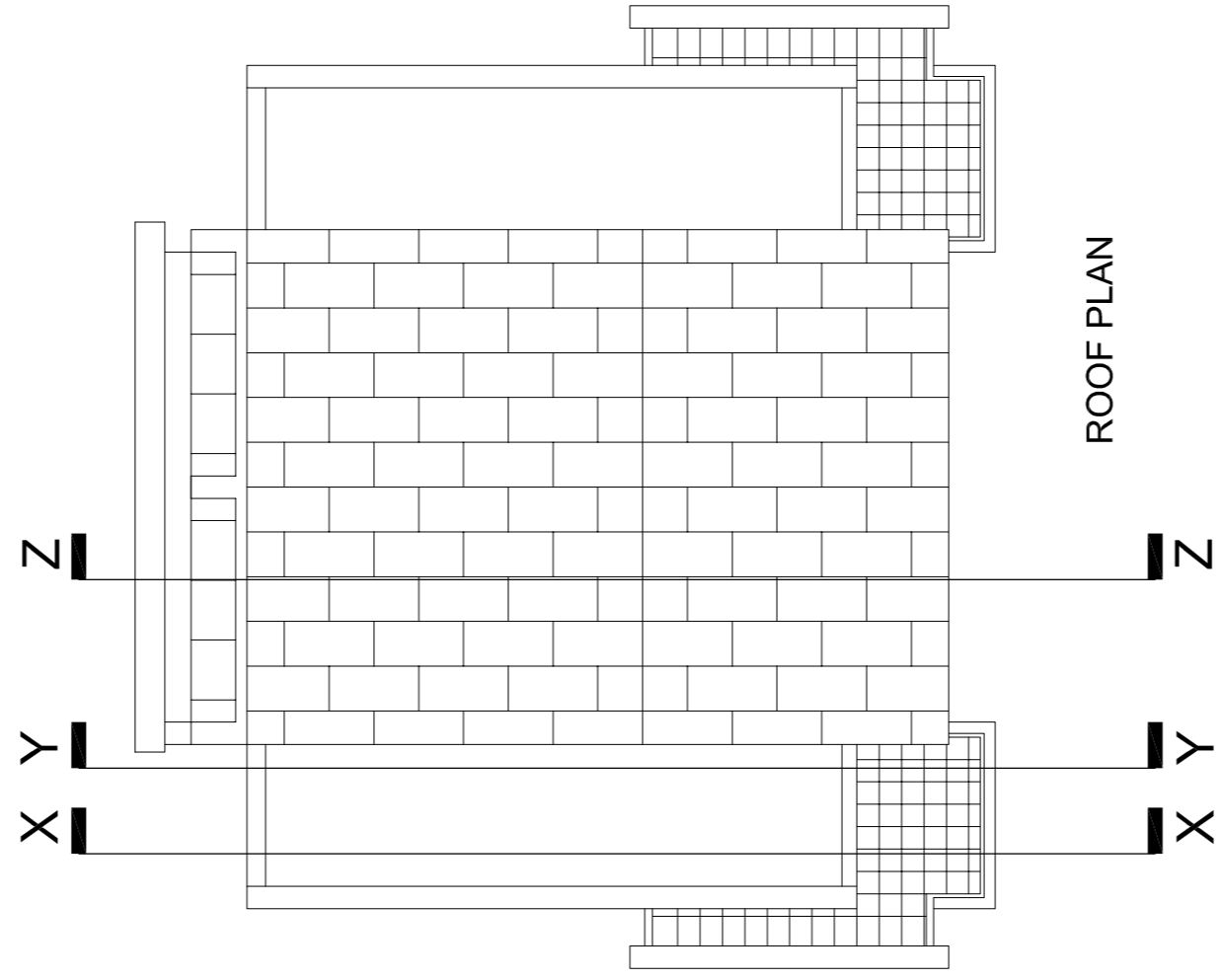
GARDEN ELEVATION



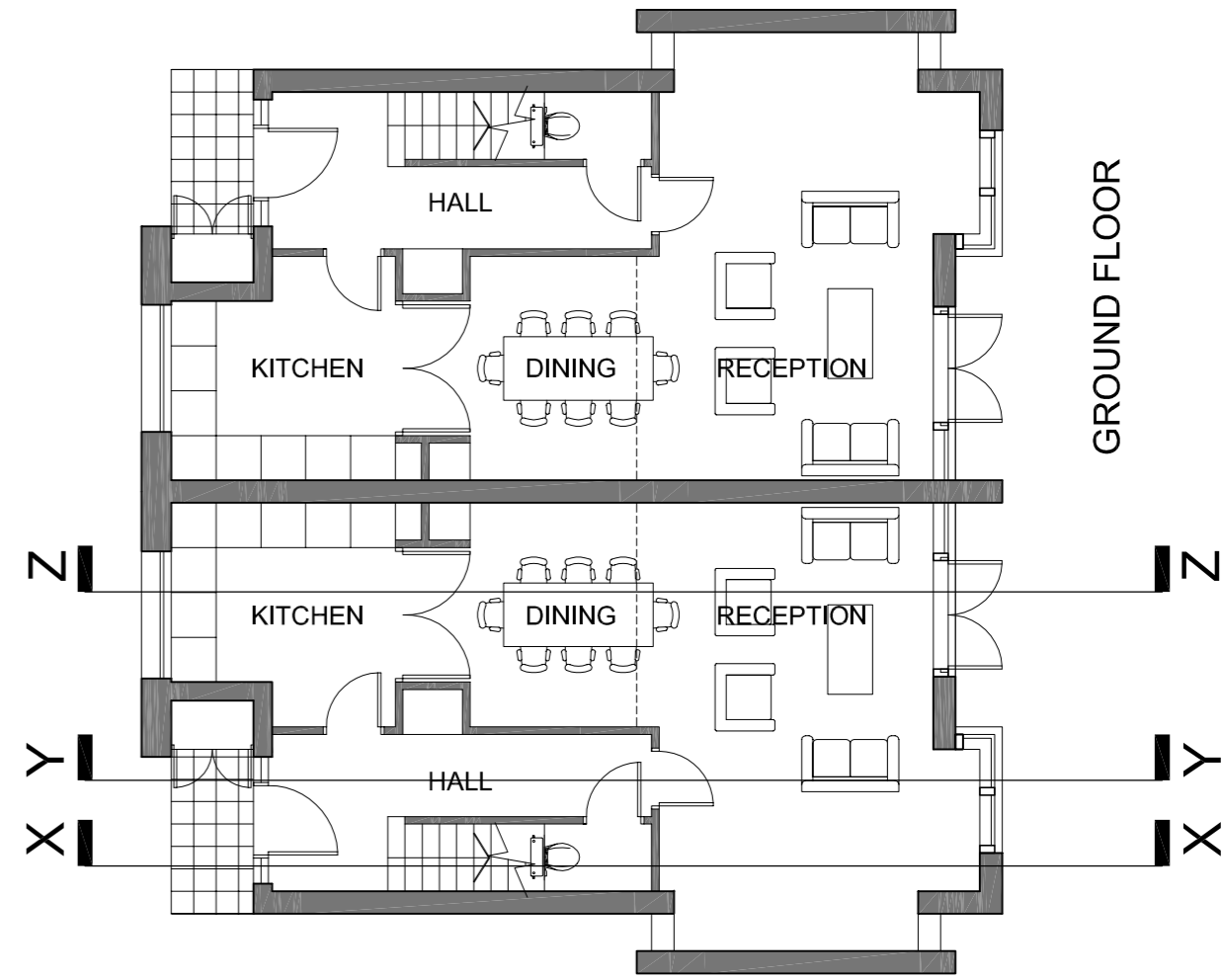
SIDE ELEVATION



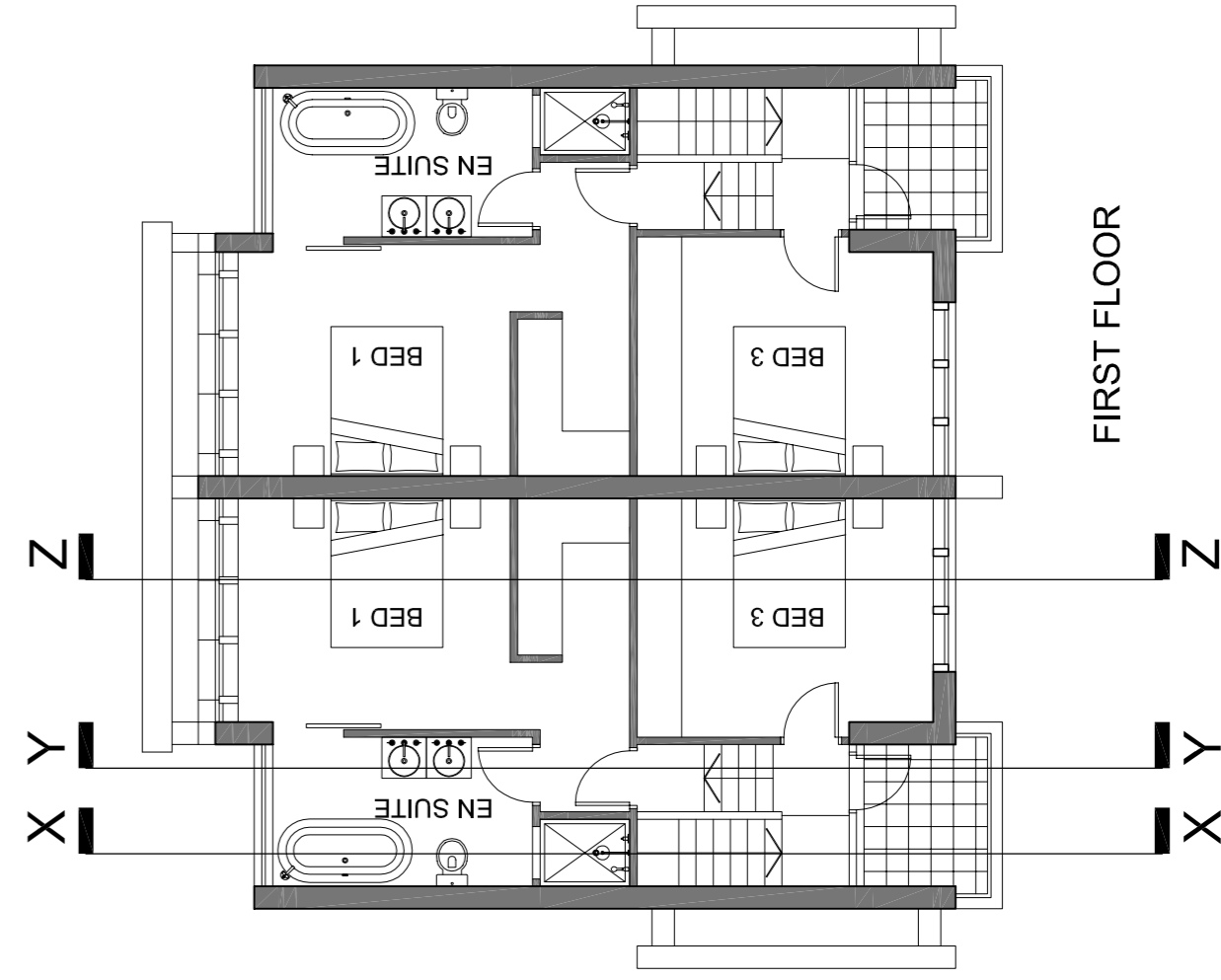
GROUND FLOOR MEZZANINE



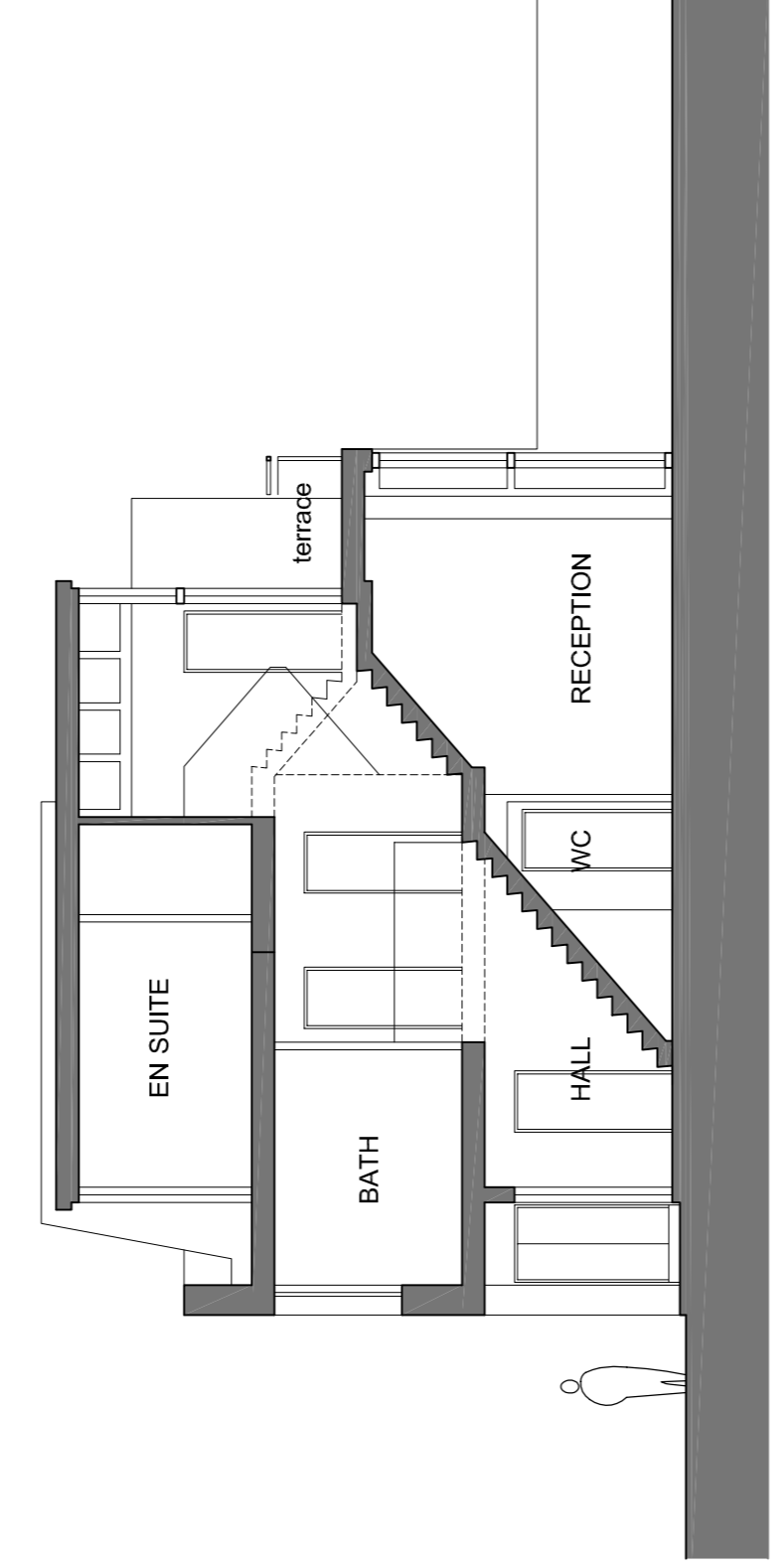
ROOF PLAN



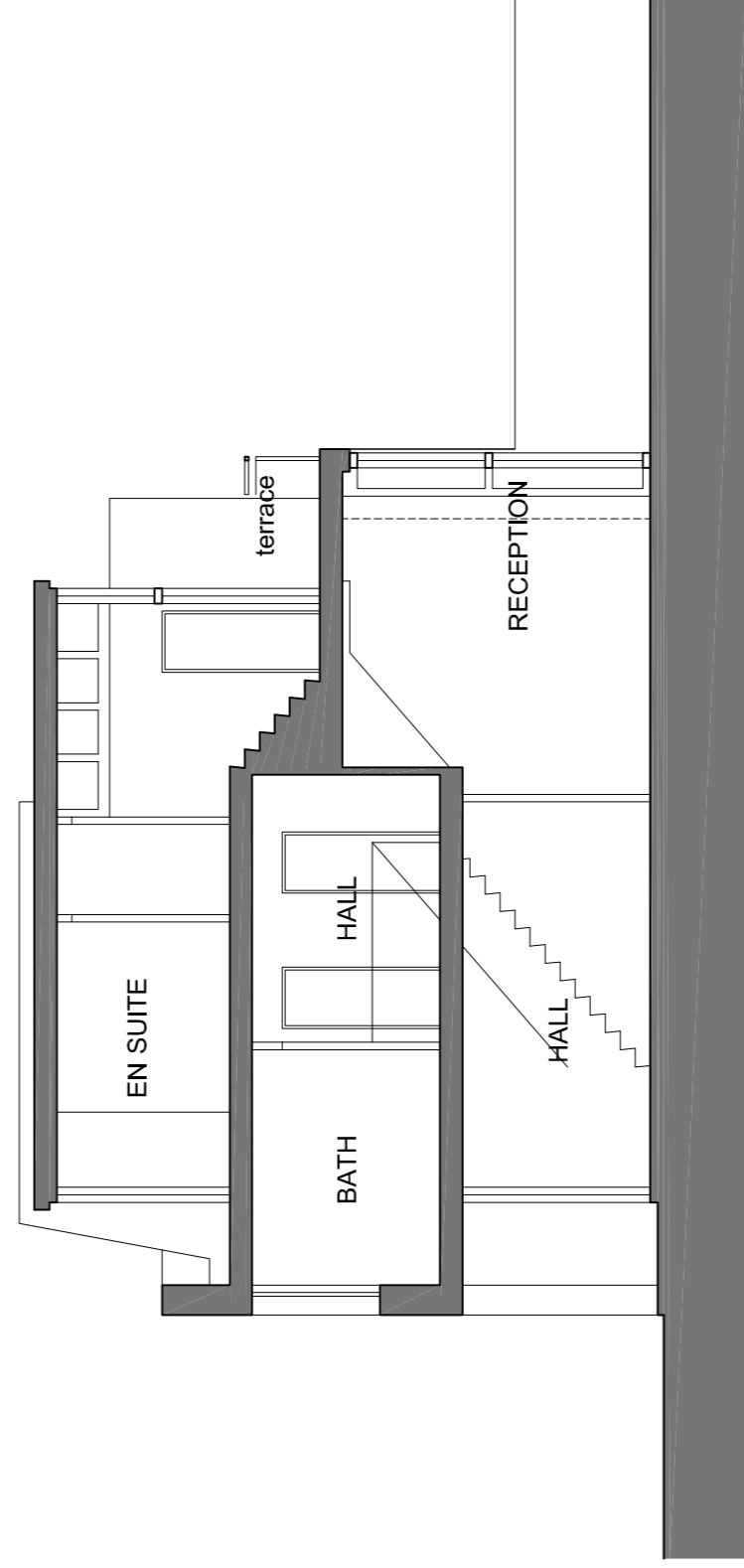
GROUND FLOOR



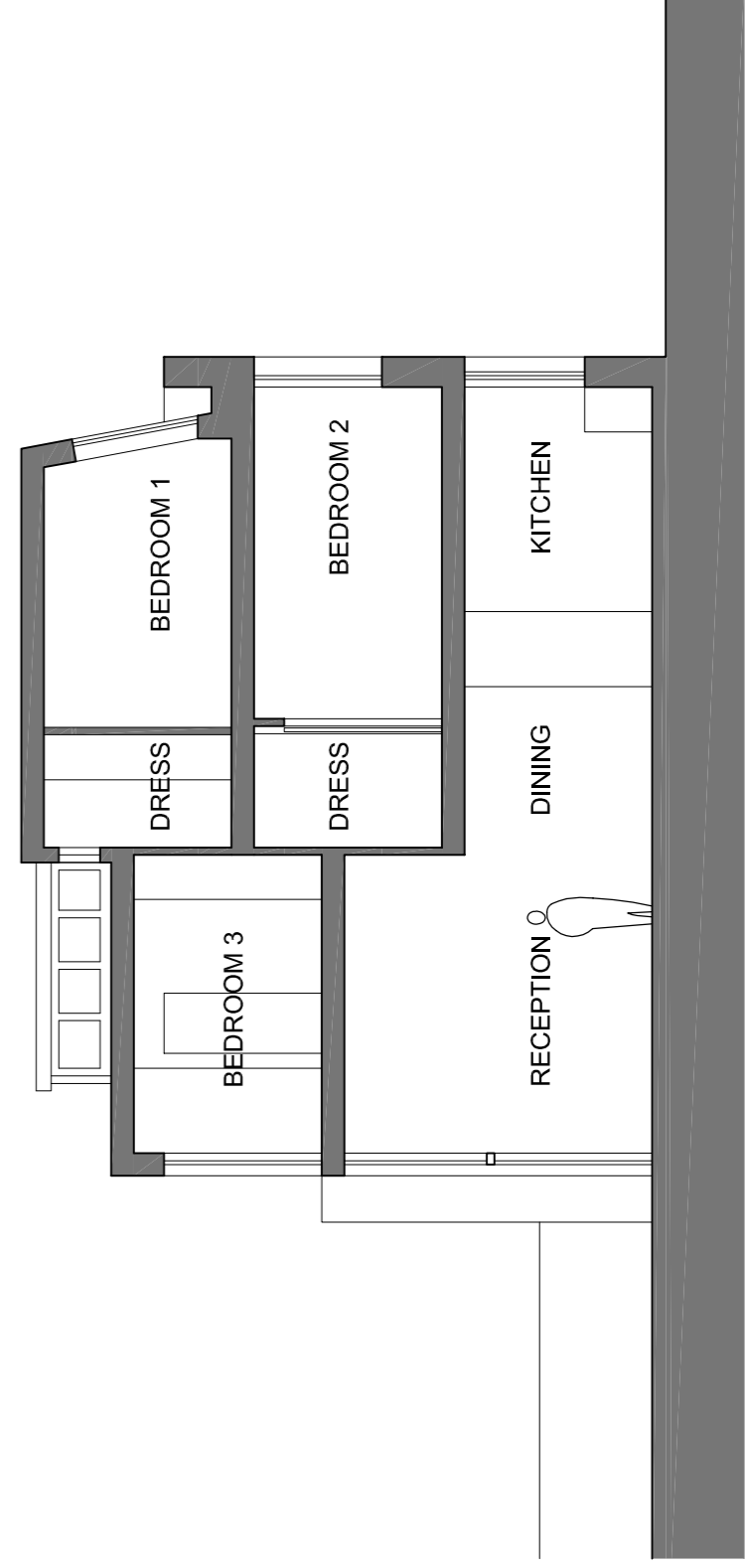
FIRST FLOOR



SECTION X - X



SECTION Y - Y



SECTION Z - Z

**MATERIAL - LEGEND**

- 1 Timber & glass prefabricated panels.
- 2 Glass.
- 3 Render
- 4 Stonework
- 5 London stock brick colour to match existing.
- 6 Planters
- 7 Zinc standing seam cladding.
- 8 Metal railings.

Rev	Notes	By	Auth
		yyrmmdd	
Rev	Notes	By	Auth
		yyrmmdd	

**ColladoCollins**  
**Architects &**  
**Masterplanners**

99 New Cavendish Street    T 020 7580 3490    E info@colladocollins.com  
 London W1W 6XH    F 020 7580 2917    www.colladocollins.com

Date: 19.11.2004    Drawn by: RM    Issued by:     
 Scale: 1:200    CAD file No: @ A1    @ A3     
 Project: CAD/Planning/01/PhaseE\_CopseHillHouse/PE-001.dwg

**St George's Healthcare NHS Trust**  
**Copse Hill - AMH (Site 1)**

Type: E  
 Copse Hill House  
 Plans, Sections 7 Elevations

Project No:	Building No:	Zone:	Drawing No:	Revision:
04003			PE-001	1