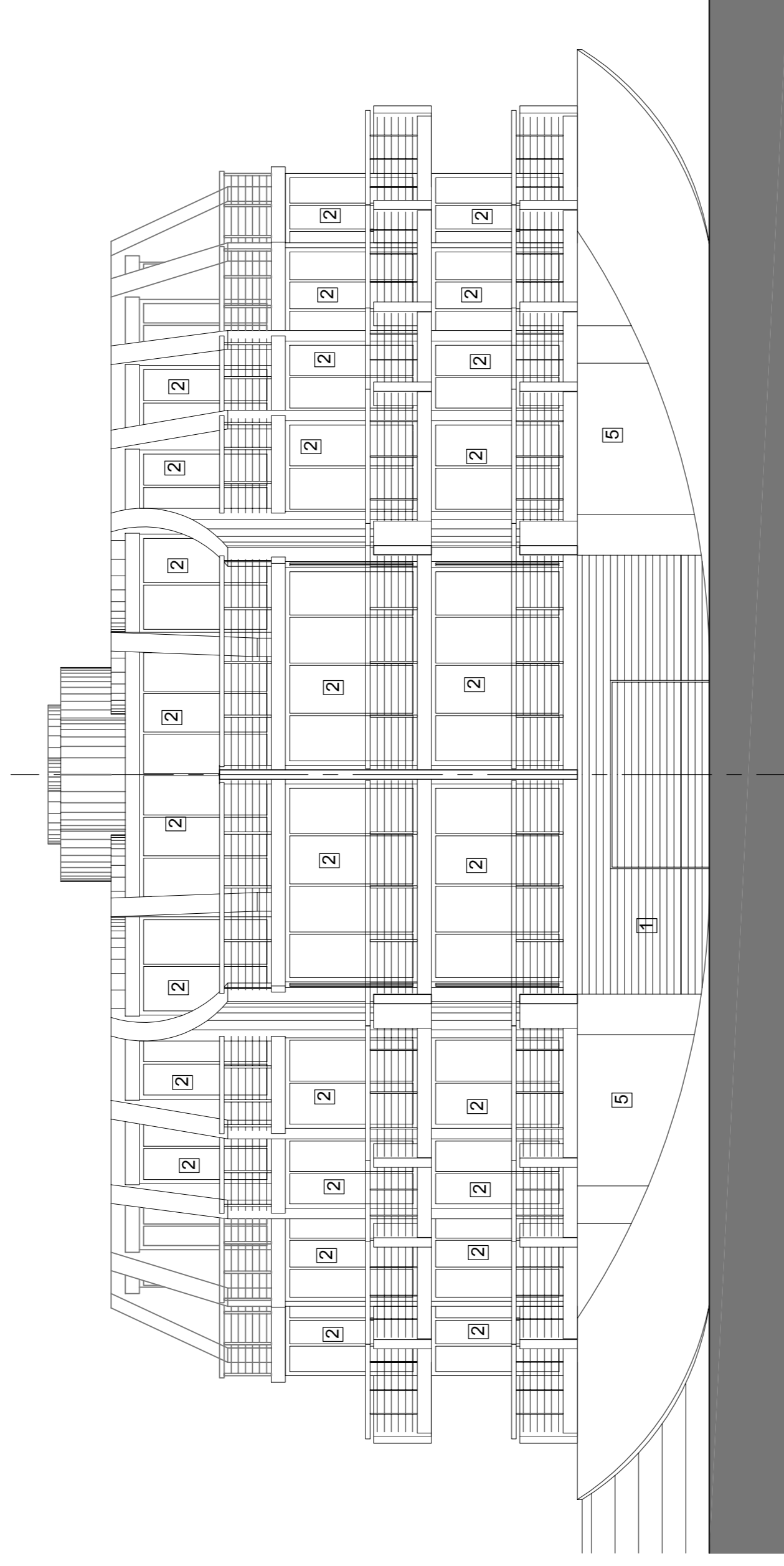
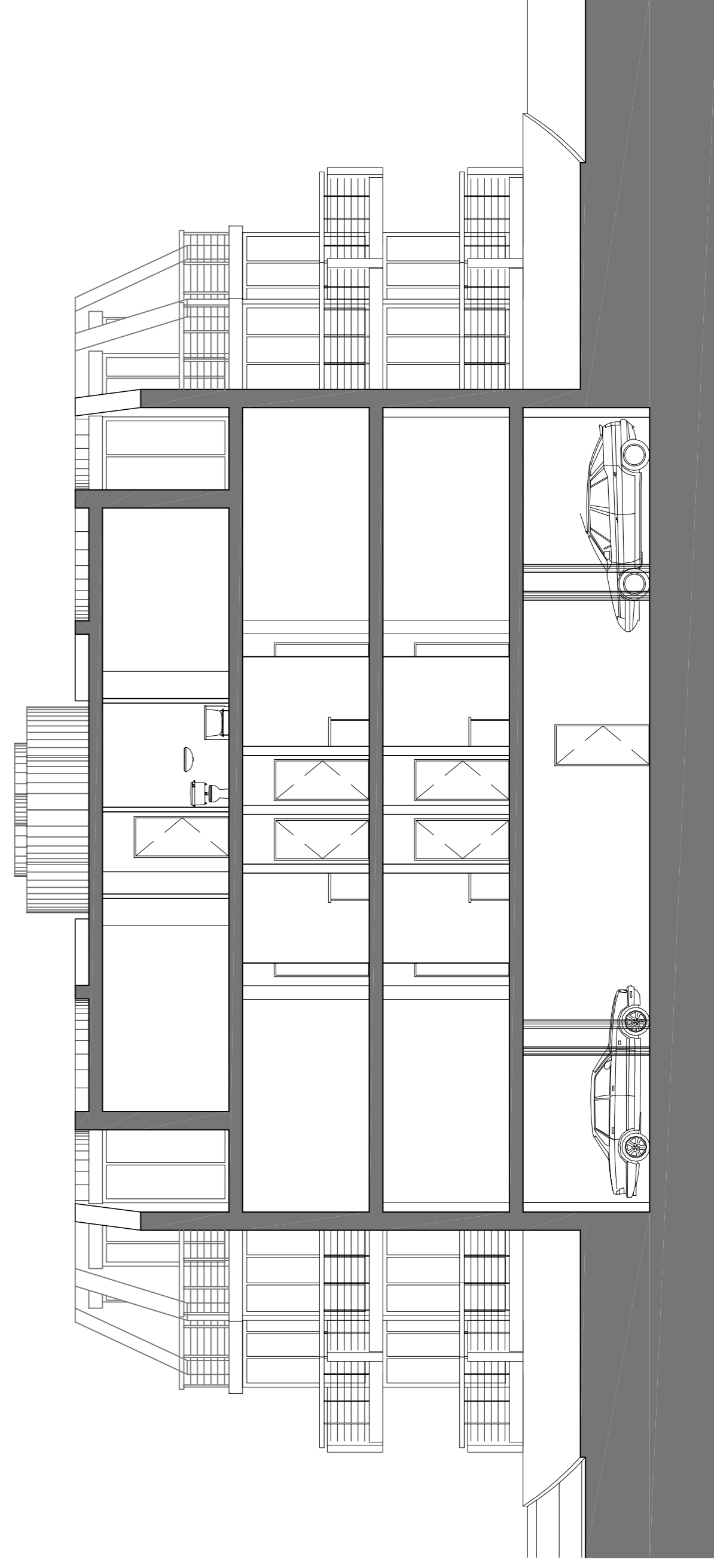


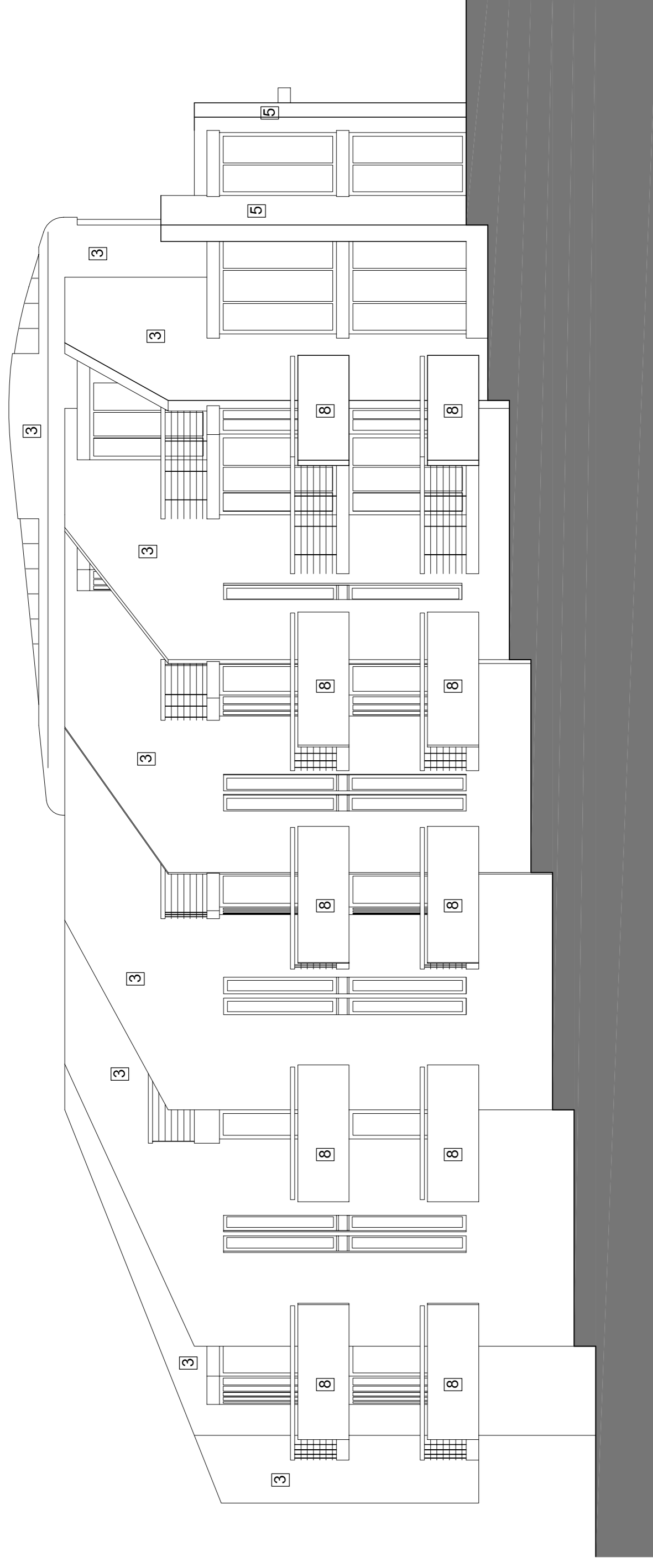
NORTH ELEVATION



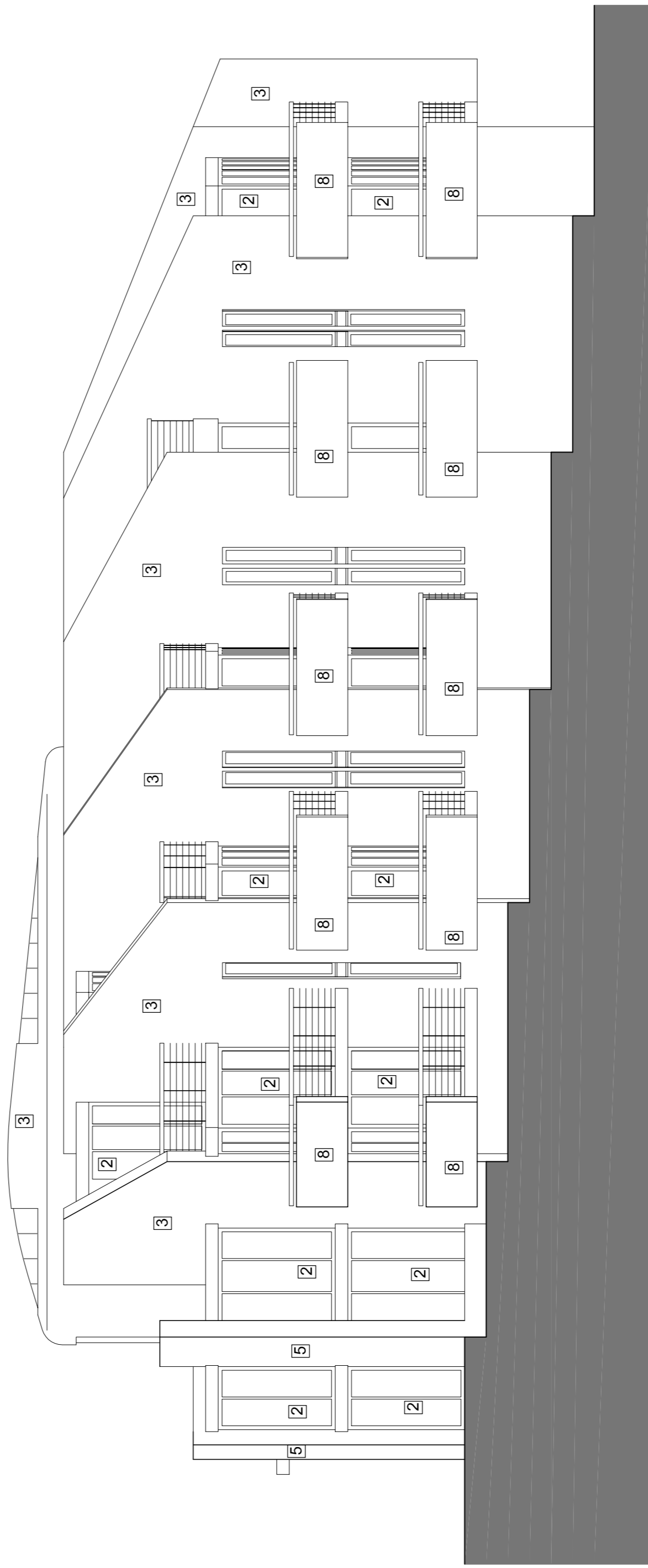
SOUTH ELEVATION



TYPICAL SECTION



EAST ELEVATION



WEST ELEVATION

MATERIAL - LEGEND

- 1 Timber & glass prefabricated panels.
- 2 Glass.
- 3 Render.
- 4 Stonework
- 5 London stock brick colour to match existing.
- 6 Planters
- 7 Zinc standing seam cladding.
- 8 Prefabricated panel.

Rev	Notes	By	Auth
yyymmdd		yyymmdd	
Rev	Notes	By	Auth
yyymmdd		yyymmdd	

<p>ColladoCollins Architects & Masterplanners</p>		<p>19 New Cavendish Street London W1W 6XH T 020 7580 3400 F 020 7580 2917 E info@colladocollins.com www.colladocollins.com</p>	
Date:	09.11.2004	Drawn by:	RM
Scale:	1:200	Issue:	RM
Project:	St George's Healthcare NHS Trust Cope Hill - The Firs (Site 2)	CAD File No:	@ A1 @ A3
Type:	Type J The Firs Sections & Elevations (Block B)	Issue:	RM
Project No:	04003	Building No:	..
Zone:	..	Drawing No:	PJ-302
Revision:	..	Revision:	1